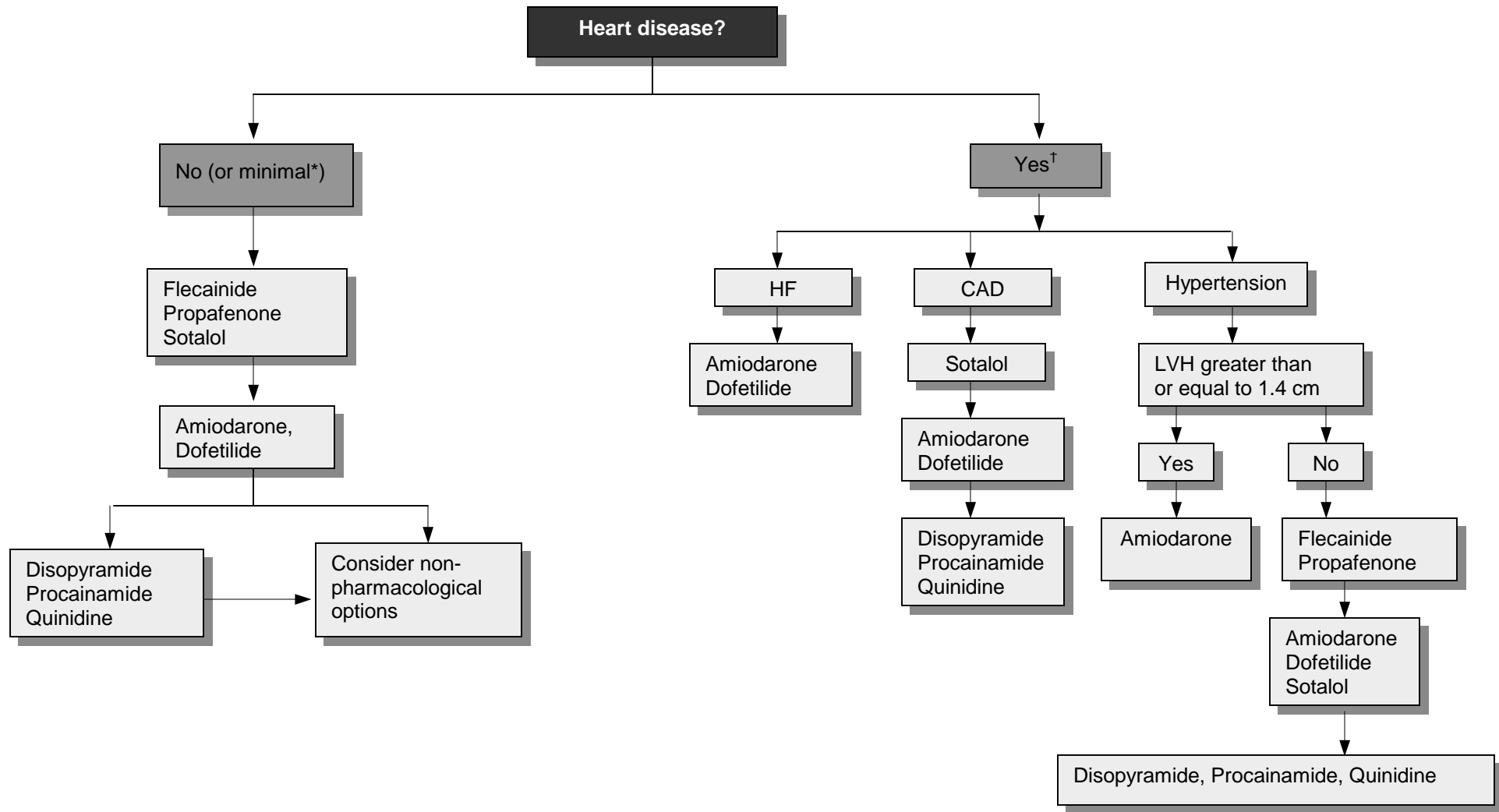


**Figure 15A. Antiarrhythmic Drug Therapy to Maintain Sinus Rhythm in Patients With Recurrent Paroxysmal or Persistent Atrial Fibrillation**



HF = heart failure; CAD = coronary artery disease; LVH = left ventricular hypertrophy

\*For adrenergic atrial fibrillation, beta-blockers or sotalol are the initial drugs of choice.

†Consider nonpharmacological options to maintain sinus rhythm if drug failure occurs.

Fuster V, Ryden LE, Asinger RW, et al. ACC/AHA/ESC guidelines for the management of patients with atrial fibrillation. A report of the American College of Cardiology/American Heart Association Task Force on Practice Guidelines and the European Society of Cardiology Committee for Practice Guidelines and Policy Conferences developed in collaboration with the North American Society of Pacing and Electrophysiology. *Eur Heart J.* 2001;22:1852-1923.